

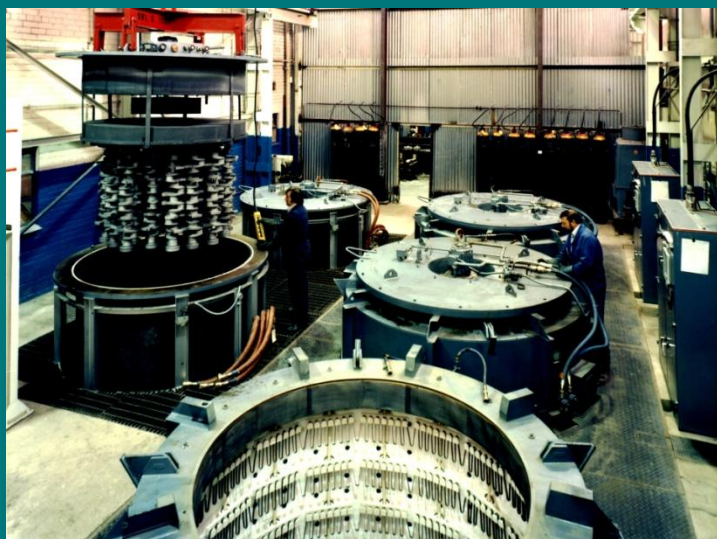


Vertical Retort Nitriding Furnaces

The **ALMOR NF Vertical Retort Gas Nitriding Furnace** is based on the well proven **WILD BARFIELD** design.

Over many years **WILD BARFIELD** has established a reputation for the supply of robust installations to meet a wide variety of gas nitriding and nitrocarburising needs for a diverse range of industries:

- Automotive
- Gears
- Mining
- Aerospace



The **GASPRO-N** programmable control system is a state of the art microprocessor based system, using advanced sensors to control the furnace temperature and nitriding atmosphere (% dissociation for nitriding potential K_N)

It can be used on new furnaces or retrofitted to suitable existing furnaces.

► DESIGN FEATURES

- Range of standard sizes
- Electric or Gas heating
- Fixed or removable retorts
- Special sizes - up to 4,500 mm deep
- up to 2,500 mm diameter
- Lid mounted fan and baffle system promotes excellent atmosphere circulation
- Excellent temperature uniformity ($\pm 5^\circ\text{C}$ 400 – 700°C – electric version)
- Hydraulically operated lid lifting gear to compensate for weight of lid
- Accelerated cooling (optional)
- Suitable for various carrier gases
- Advanced process controls (NH_3 dissociation or K_N)

OTHER ALMOR GROUP PRODUCTS:

- Air circulation tempering furnaces
- Cooling stations
- Work support jigs
- Cleaning systems
- Ammonia dissociators
- Process control systems
- Spares parts and service

For more information

Daleside Road
Nottingham
NG2 3GJ
England



A PARTNER OF
Michelin

Tel: +44 (0)115 986 8773
Fax: +44 (0)115 986 6716
E.mail: sales@almor.co.uk
Web: www.almor.co.uk

Vertical Retort Nitriding Furnaces

➤ Customer Benefits

■ MINIMUM MAINTENANCE

The electrically heated models are heated by high quality nickel chrome elements, designed with low energy dissipation to give long, trouble free, life. The elements are graded to promote good temperature uniformity.

■ RELIABLE, CONSISTENT RESULTS

A lid mounted fan and baffle system promotes excellent atmosphere circulation.

Advanced process control systems are incorporated to give accurate control of the atmosphere. These include automatic dissociation or nitriding potential (K_N) systems using H_2 sensors or NH_3 IR analysers.

■ COMPLETE SOLUTION

ALMOR can provide a complete turn key solution, including site installation, commissioning and training. Companion equipment includes cooling stations, work support jigs and ammonia dissociation.

■ AFTER SALES SUPPORT

ALMOR provide complete after sales spares and service support. Spares include heating elements, nickel chrome retorts and work support systems.

Maintenance service contracts can be provided together with metallurgical/technical consultancy.

➤ Technical Data

MODEL	EFFECTIVE DIAMETER MM	EFFECTIVE DEPTH MM	RATING Kw (1)	APPROXIMATE OVERALL DIMENSIONS MM		
				W	L	H (2)
NF1632	400	815	30	2500	2600	2750
NF2430	610	760	40	2800	2900	2700
NF2438	610	965	48	2800	2900	2850
NF2446	610	1170	57	2800	2900	3050
NF2454	610	1370	66	2800	2900	3250
NF3638	915	965	66	3700	3400	3150
NF3654	915	1370	90	3700	3400	3550
NF3662	915	1575	130	3700	3400	3800

(1): The above data is for electrically heated fixed retort design. Standard models operate on 400V, 3-phase, 50 Hz supply. Other voltages/frequencies available to order

(2): Not including height required to crane lifting hook, for work removal